

Visit all of the fall 2015 locations:

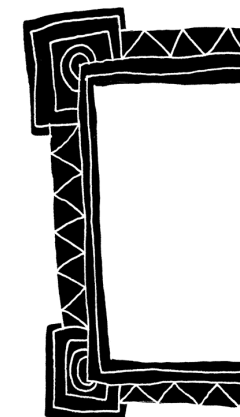
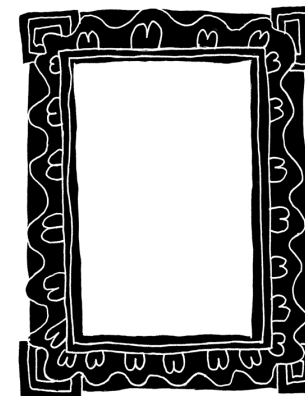
Fishtown
Ambler
Norristown
Wayne
West Chester

Philadelphia Museum of Art
2600 Benjamin Franklin Parkway
Philadelphia, PA 19130

Through scholarly study and creative play, the Philadelphia Museum of Art
inspires people to discover the spirit of imagination that lies within.

InsideOut

Ambler
Fall 2015



Join the Conversation



philamuseum.org/insideout
#artinsideout

Illustrations by Ana Benaroya. 1: The Mr. and Mrs. Carroll S. Tyson, Jr., Collection, 1963-116-19; 2: The Louise and Walter Arensberg Collection, 1950-134-94; 3: Purchased with the gifts (by exchange) of R. Wistar Harvey, Mrs. T. Charlton Henry, Mr. and Mrs. J. Stoddell Stokes, Elise Robinson Paumgarten from the Sallie Crozer Hilprecht Collection, Lucie Washington Mitcheson in memory of Robert Stockton Johnson Mitcheson for the Robert Stockton Johnson Mitcheson Collection, R. Nelson Buckley, the estate of Rictavia Schiff, and the McNeil Acquisition Fund for American Art and Material Culture, 2011-87-1; 4: Bequest of Charlotte Dorrance Wright, 1978-1-28 5: 125th Anniversary Acquisition. Purchased with funds contributed by The Daniel W. Dietrich Foundation in memory of Joseph C. Bailey and with a grant from The Judith Rothschild Foundation, 1998-3-1; 6: Bequest of Georgia O'Keeffe for the Alfred Stieglitz Collection, 1987-70-4 © The Georgia O'Keeffe Foundation/Artists Rights Society (ARS), New York; 7: Purchased with funds contributed by Mrs. Clement Biddle Wood in memory of her husband, 1930-24-3; 8: Purchased with the Henry Clifford Memorial Fund, 1976-34-1; 9: The Louis E. Stern Collection, 1963-181-64; 10: A. E. Gallatin Collection, 1950-1-1 © 2015 Estate of Pablo Picasso/Artists Rights Society (ARS), New York; 11: The George W. Elkins Collection, E1924-4-1.

Art in Unexpected Places

Free admission weekend for **Inside Out** community residents on
October 16–18. Check the website for details.

Inside Out is generously supported by the John S. and James L. Knight Foundation.

Special thanks to H&G Sign Co. and Krain Outdoor Advertising for providing assistance with artwork reproductions, offering access throughout Philadelphia.

KF Knight Foundation

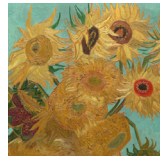
Philadelphia
Museum of **Art**

Philadelphia
Museum of
Art

InsideOut

Inside Out brings high-quality replicas of artworks from the Museum's collection to neighborhoods throughout the region.

- 1 Forest & Main Brewing Co.**
61 N. Main St.
Sunflowers, 1888 or 1889, by Vincent van Gogh
- 2 Bar 31**
31 N. Main St.
Man in a Café, 1912, by Juan Gris
- 3 GM Deck & Sons Inc.**
27 N. Main St.
Portrait of Yarrow Mamout (Muhammad Yaro), 1819, by Charles Willson Peale
- 4 No Bare Walls Framing Studio**
13 W. Butler Ave.
Girl in a Red Ruff, about 1896, by Pierre-Auguste Renoir
- 5 El Limon**
38 E. Butler Ave.
Portrait of James Baldwin, 1945, by Beauford Delaney
- 6 First Presbyterian Church**
4 S. Ridge Ave.
Rondel Depicting Holofernes's Army Crossing the Euphrates River, 1246–48, made in France
- 7 Ambler Manor**
48 N. Main St.
Two Calla Lilies on Pink, 1928, by Georgia O'Keeffe
- 8 Xtra 101**
101 E. Butler Ave.
Portrait of a Roman Lady (La Nanna), 1859, by Sir Frederic Leighton
- 9 Wine & Spirits**
132 E. Butler Ave.
Carnival Evening, 1886, by Henri Rousseau
- 10 SweetBriar Café**
11 Lindenwold Ave.
Self-Portrait with Palette, 1906, by Pablo Picasso
- 11 Wissahickon Valley Public Library**
209 Race St.
A Reading from Homer, 1885, by Sir Lawrence Alma-Tadema



1 Vincent van Gogh



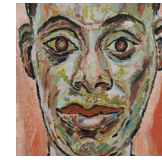
2 Juan Gris



3 Charles Willson Peale



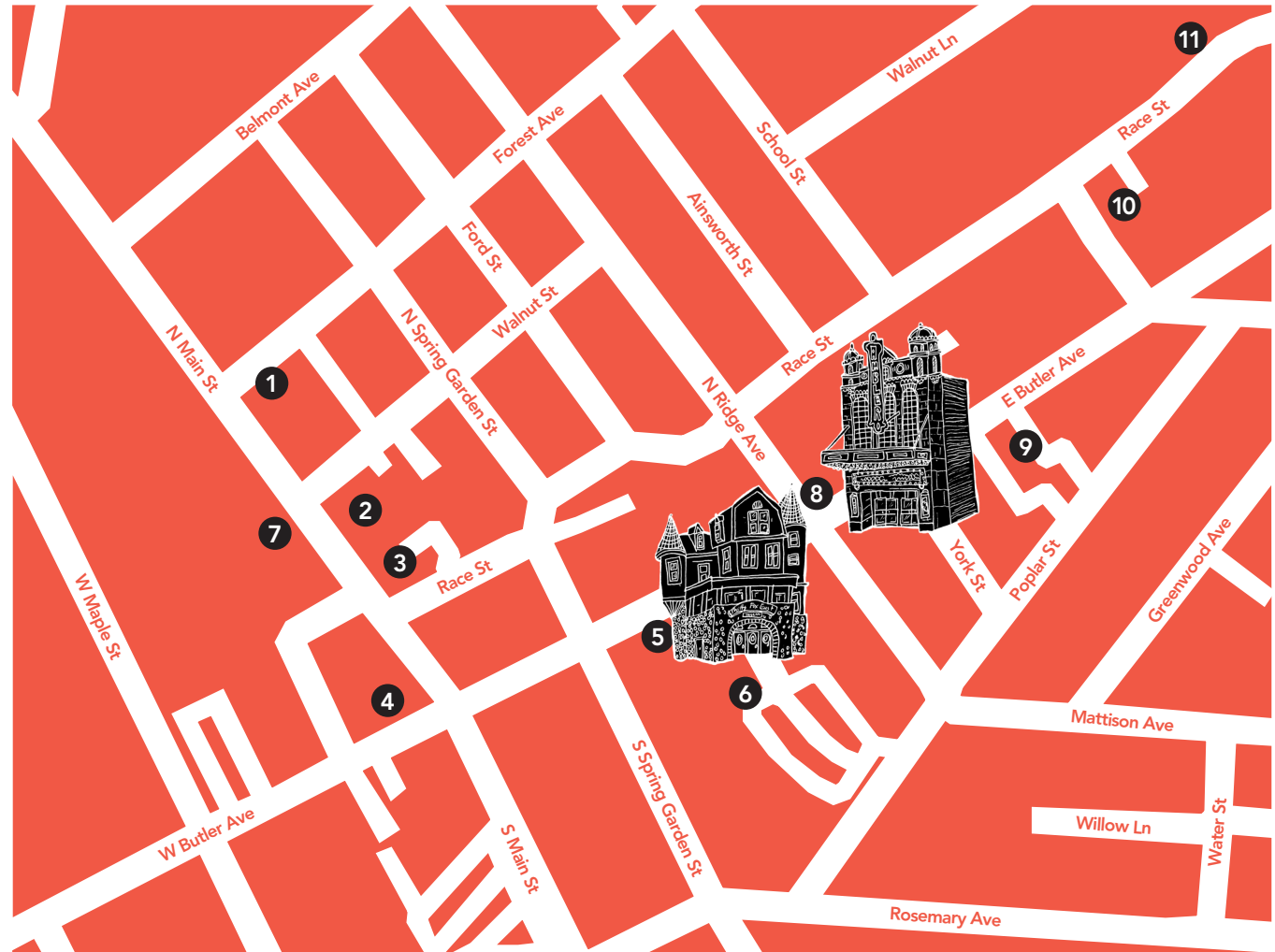
4 Pierre-Auguste Renoir



5 Beauford Delaney



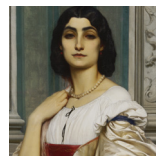
6 Rondel Depicting Holofernes's Army Crossing the Euphrates River



7 Georgia O'Keeffe



8 Sir Frederic Leighton



9 Henri Rousseau



10 Pablo Picasso



11 Sir Lawrence Alma-Tadema

